

PORTABLE INSTRUMENT

N330



VIBROMETER

MACHINE
ANALYSER

SPECTRUM
ANALYSER

BALANCER
1-2 PLANES



NEW



CEMB

BALANCING MACHINES

N330 PORTABLE INSTRUMENT



STANDARD ACCESSORIES

- No.1 accelerometer transducer 100mV/g
- No.1 magnetic base \varnothing 25mm
- No.1 probe
- No.1 transducer connection cable L 2m
- No.1 Photocell complete with upright and magnetic base
- Set of angle rules
- No.1 USB stick with manuals
- Battery charger with multiplug adapters
- Carrying case
- Micro USB Cable

OPTIONAL ACCESSORIES

- No.1 Connection cable 5m for transducer
- N.1 Connection cable 5m for photocell
- No.1 Extension cable 10m for transducer
- No.1 Extension cable 10m for photocell



The Smart solution for vibration analysis and balancing

Intuitive functions under full control

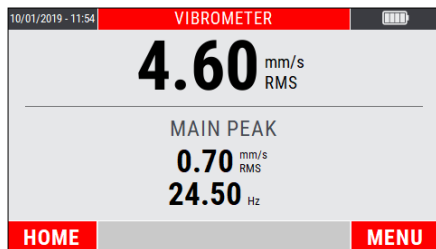


10 KHz Vibrometer and Machine Analyzer with static and dynamic balancing function

- **4.3" color graphic display**
Very high luminosity and contrast for sunlight use
Wide view angle
- **Enhanced click keyboard**
Optimal tactile feedback
Designed for gloves use
- **Heavy duty and metallic connectors**
- **Fast measure**
- **Huge memory space**
14.8 GByte, expandible to 128 GByte
1000+ measures for each type
- **Easy reporting**
Screenshot display capture and save
Smart route data store
Output file: JSON format - Micro USB 2.0 data port

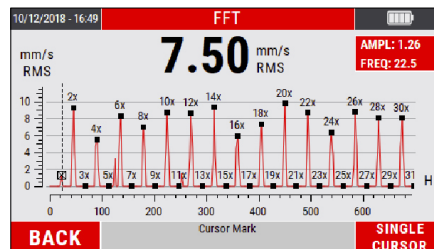


VIBROMETER & TACHO



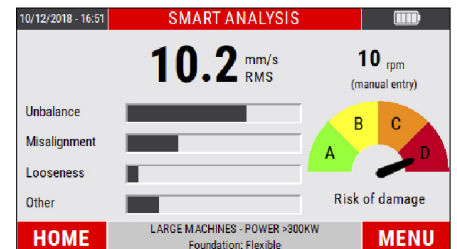
- Big readable characters
- Overall with main peak
- 1x fundamental with phase
- Speed rotation

HIGH RESOLUTION FFT



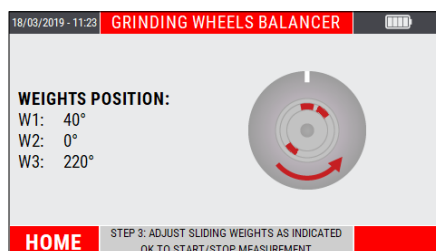
- Graphic zoom
- Peak cursors
- Autoscale feature
- List of main peaks

SMART ANALYSIS



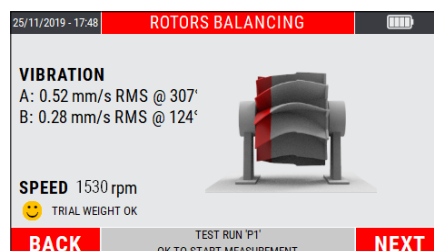
- Machine troubleshoot at a glance
- Vibration root cause identification
- Step by step according ISO10816-3
- Automatic speed detection

GRINDING WHEEL BALANCING



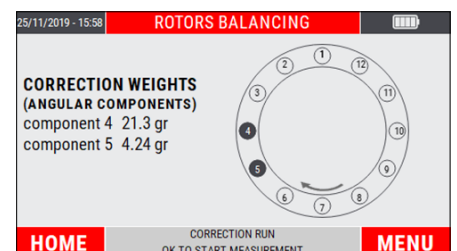
- Grinding balancing with 2 or 3 counterweights
- Graphic interface with real time correction
- Balancing Report

ROTORS BALANCING



- Static/Dynamic balancing (1-2 planes)
- Check of trial weight effect
- Balancing tolerance according to ISO21940-11
- Estimate of trial weight calculation in grams
- Balancing by addition or removal mass

ANGULAR SPLIT



- Split angle calculation:
 - Split weights
 - Split on fixed available angular locations (from 1 up to 24)

TECHNICAL DATA

GENERAL CHARACTERISTICS

- Display: 4,3" colour LED-backlit TFT LCD (480 x 272 pixel)
- New EasyClick tactile keyboard with embossed keys
- Internal memory: 14,8 Gb (expandible to 128 Gb)
- Multi languages user interface

MEASUREMENT TYPES

- Effective value (RMS)
- Peak value (Pk)
- Peak-to-peak value (PP)

MEASURING PERFORMANCE

- Bandwidth: 1-10 KHz
- FFT Resolution: Max 3200 lines
- Tacho: Up to 250000 rpm

UNITS OF MEASUREMENT

- Acceleration: [g]
- Velocity: [mm/s] or [inch/s]
- Displacement: [µm] or [mils]
- Frequency: [Hz] or [Cpm]

INPUT

- 1 measuring channel (for vibrometer function) IEPE sensor, accelerometer and velomitor.
With a specify cable pluggable on a BNC for read any dynamic signal max. 10V PkPk
- 2 channels specify for balancing (1-2 planes)
- 1 photocell channel (velocity and angle reference)
- 1 MicroUSB 2.0 port for data transfer
- 1 jack plug for battery charger

AMBIENT

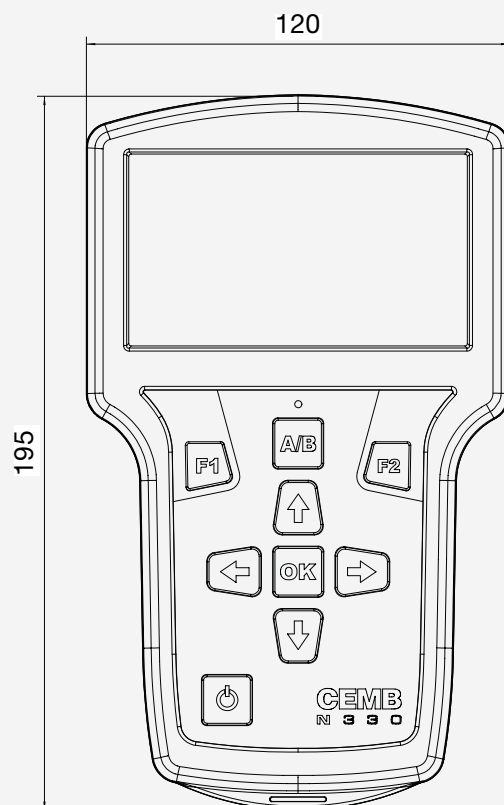
- Temperature: from -20° to +50° C
- Air humidity: from 0 to 95% without condensate
- Protection: IP54

POWER SUPPLY

- Long Life Battery: > 8 hours based on typical use
- Charging time: 2,5 hours for 80% recharge
4 hours for 100% recharge
- Rechargeable 3100 mAh Lithium battery
- Power supply-battery charger for 100-240 V, 50/60 Hz (24 V, 1.5 A)

CARRYING CASE DIMENSIONS AND WEIGHT

- Approx. 370(L) x 300 (H) x 115(D) 1800 g



CEMB S.p.A. - Via Risorgimento, 9
23826 Mandello del Lario (LC) - Italy
www.cemb.com



Vibration analysis division:
Phone +39 0341 706111
e-mail: stm@cemb.com

Tutti i dati e le caratteristiche menzionati in questo catalogo sono a titolo indicativo e non costituiscono nessun impegno per la nostra Società che si riserva il diritto di apportare senza alcun preavviso, tutte le variazioni che riterrà opportune.